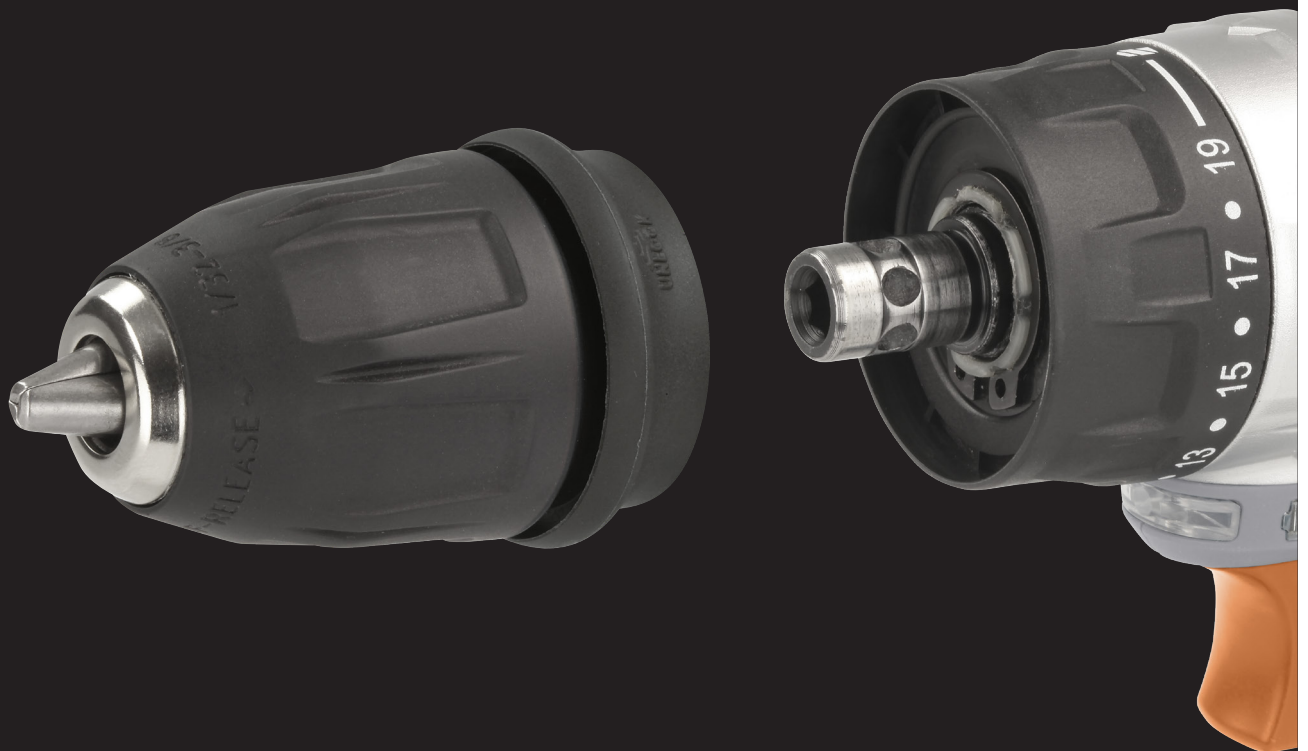


YOU SPIN MY HEAD RIGHT ROUND

MAXXSERIES
12 V Drill with detachable chuck



BATAVIA
TOOLS TO BUILD

ITEM-NO.: 7062864

www.batavia.eu

MAXXSERIES

12 V Drill with detachable chuck

- Detachable keyless chuck + built-in 1/4" hex chuck.
- 2-speed gearbox for powerful screwing and fast drilling
- 10 mm keyless chuck + 1/4" hex chuck
- Adjustable electronic speed control for sensitive work
- LED work light
- Ergonomic soft grip for comfortable working
- L-Shape design handgrip for upright placement



0 - 350
0 - 1200 min⁻¹



40 Nm



Technical information

Rated voltage:	12 V Li-Ion
Speed:	0 - 350 / 1300 min ⁻¹
Chuck:	1 - 10 mm (keyless) + 1/4" hex chuck
Torque:	27 Nm
Product weight :	1.09 kg

Delivery includes

	Cordless drill
	2x Battery
	Bitholder
	Charger

Certificates

CE, EMC, RoHS, PAHS, REACH

Logistical data

Item-No.:	7062864
EAN:	4050255035766
Dimensions unit packaging (L x W x H):	21 x 6.8 x 22.5 cm
Gross weight unit packaging:	1.7 kg
Quantity / Export carton:	4 pcs
Dimensions export carton (L x W x H):	29 x 23 x 25 cm
Gross weight export carton:	7.1 kg
20'GP:	6300 pcs
40'GP:	13900 pcs
40'HC:	16500 pcs

